

SOLDERING POT

FX-305

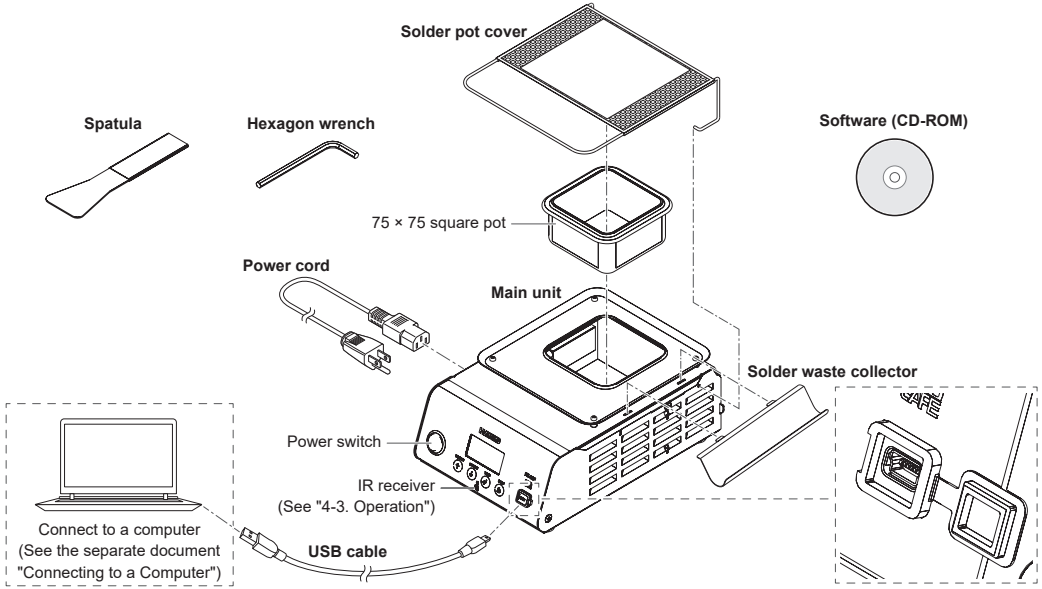
Instruction Manual

Thank you for purchasing a HAKKO product.
This product is a soldering pot.

Make sure to read this manual before using the product, and keep it in a safe place for future reference.

1. Set contents and assembly

Confirm the contents before use. *This product may differ from the following:	
Main Unit FX-305 (Pot size: 75 × 75 square)	1
Solder waste collector	1
Spatula	1
Solder pot cover	1
Hexagon wrench (Size 2 mm)	1
USB cable.....	1
Software (CD-ROM)	1
Power cord	1
Instruction manual (this document).....	1
Instruction manual (Quick Parameter Settings / Connecting to a Computer)	1



See the web page for the product information such as replacement parts/options.
https://www.hakko.com/doc_fx305-ah

3. Warnings, Cautions, and Notes

Warnings, cautions, and notes are placed at critical points in this manual to direct your attention to significant items. They are defined as follows:

- WARNING:** Failure to comply with a WARNING may result in serious injury or death.
- CAUTION:** Failure to comply with a CAUTION may result in injury to the operator, or damage to the items involved.
- NOTE:** This indicates procedures or information that are important in a process described in this document.

Be sure to observe the following precautions to ensure safety.

WARNING
<ul style="list-style-type: none">● This appliance can be used by children aged from 8 years and above and persons with reduced physical, sensory or mental capabilities or lack of experience and knowledge if they have been given supervision or instruction concerning use of the appliance in a safe way and understand the hazards involved.● Children shall not play with the appliance.● Cleaning and user maintenance shall not be made by children without supervision.● When in use the pot and molten solder are able to reach temperatures higher than 500°C. You may risk getting burned or causing a fire if mishandled.● Use the product on a stable metal workbench and make sure there are no flammable materials nearby.● Do not put water into the pot. Doing so is dangerous, as it can cause solder to splatter.● Do not touch any metal parts around the pot.● Do not place anything that easily burns or ignites near the product.● Make sure that people nearby are aware of the "high temperature danger."● Disconnect the power cord and wait until the solder and pot have cooled to a safe ambient temperature before changing pots.● When the product is not in use, being repair, or being cleaned, turn off the power switch and disconnect the plug from the power outlet.

Failure to observe the following precautions to ensure safety might result in electric shock, malfunction or other trouble.

CAUTION
<ul style="list-style-type: none">● Before using this product, fully read all descriptions in this document.● Only use the product for soldering.● Soldering produces smoke, so make sure to work in a well-ventilated area.● Use genuine HAKKO parts for included parts/replacement parts/options.● Do not modify this product.● Do not use damaged cords or plugs. Doing so can result in malfunction or injury.● Do not use the product if it has been dropped or shows signs of damage.● When inserting and removing the cord, hold the plug body and do not pull the cord.● Do not allow this product to get wet. Also, do not handle it with wet hands.● Do not perform any other actions that may be considered to be dangerous.

2. Specifications

Power consumption	550 W (100 V), 680 W (110 V), 575 W (120 V), 580 W (220 V), 640 W (230 V), 700 W (240 V)
Temperature range	50 × 50 square: 50 to 530°C (120 to 990°F) 75 × 75 square: 50 to 500°C (120 to 940°F) 100 × 100 square: 50 to 450°C (120 to 850°F)
Dimensions	Main unit only: 162 (W) × 100 (H) × 239 (D) mm (6.4 × 3.9 × 9.4 in) With solder pot cover attached: 162 (W) × 123 (H) × 239 (D) mm (6.4 × 4.8 × 9.4 in)
Weight	2.5 kg (5.5 lb)

- * The weight excludes the cord.
- * This product is applied with electrostatic countermeasures.
- * The molten solder capacity is measured using Sn-Pb based solder.
- * Please note that specifications and appearance are subject to change without notice in the interest of product improvement.

Pot

Solder pot dimensions (inner)	50 × 50 square: 50 (W) × 42.5 (H) × 50 (D) mm (2 × 1.7 × 2 in) 75 × 75 square: 75 (W) × 42.5 (H) × 75 (D) mm (3 × 1.7 × 3 in) 100 × 100 square: 100 (W) × 53 (H) × 100 (D) mm (3.9 × 2.1 × 3.9 in)
Molten solder capacity	50 × 50 square: 0.85 kg (1.9 lb) 75 × 75 square: 1.9 kg (4.2 lb) 100 × 100 square: 2.75 kg (6.1 lb)

CAUTION
Handling precautions for ESD Safe products This product contains electrostatic countermeasures, so please use the following precautions: 1. Not all plastic parts are insulators, they may be conductive. Be careful not to expose live electrical parts or damage insulating materials when performing repairs or replacing parts. 2. Be sure the product is grounded before use.



HAKKO CORPORATION

HEAD OFFICE

4-5, Shiokusa 2-chome, Naniwa-ku, Osaka 556-0024 JAPAN
TEL: +81-6-6561-3225 FAX: +81-6-6561-8466
<https://www.hakko.com> E-mail: sales@hakko.com

OVERSEAS AFFILIATES

U.S.A.: AMERICAN HAKKO PRODUCTS, INC.

TEL: (661) 294-0090 FAX: (661) 294-0096
Toll Free (800) 88-HAKKO
<https://www.HakkoUSA.com> E-mail: Support@HakkoUSA.com

HONG KONG: HAKKO DEVELOPMENT CO., LTD.

TEL: 2811-5588 FAX: 2590-0217
<https://www.hakko.com.cn> E-mail: info@hakko.com.hk

SINGAPORE: HAKKO PRODUCTS PTE., LTD.

TEL: 6748-2277 FAX: 6744-0033
<https://www.hakko.com.sg> E-mail: sales@hakko.com.sg

Please access the code for overseas distributors.

https://www.hakko.com/doc_network

© 2022-2024 HAKKO Corporation. All Rights Reserved.



2024.12
80.1025-003

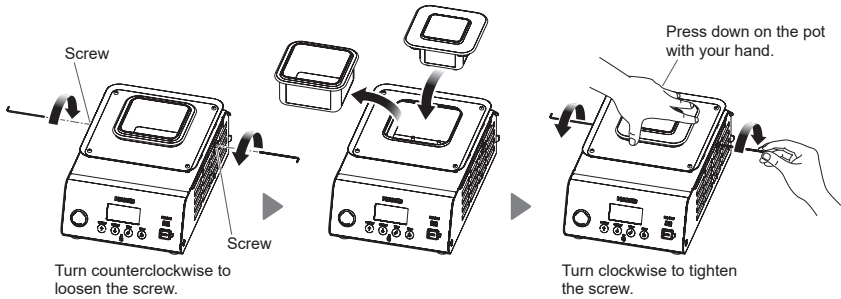
4. Operation

4-1. Replacing the pot

CAUTION
Turn off the power switch and disconnect the plug from the outlet, then make sure the solder has hardened and that the pot has cooled to a safe ambient temperature before replacing the pot.

- (1) Loosen (do not remove) the two screws securing the pot with the 2 mm hexagon wrench.
- (2) Replace the pot.
- (3) Tighten the left and right screws evenly and gradually. Be sure to check that both screws are tightened.

NOTE Do not overtighten the screws. The chassis may deform, causing malfunction, or the pot may lift.



4-2. Preparations

CAUTION
When opening and closing the solder pot cover, only use the front section of the frame (see figure A). Other parts of the frame may be hot while in use.

- Use the "fixing support" (optional) when securing the product to table.

NOTE Prepare screws for securing the product to the edge of the table.

- Factory default settings are as follows:

Setting temperature 350°C
Solder type Sn-Ag-Cu
Pot size 75 × 75 square

NOTE To change the parameters, see the separate document "Quick Parameter Settings."

- Attach the solder waste collector to one side of the main unit.

NOTE When attaching the solder pot cover, you cannot attach the solder waste collector to the back.

- Attach the solder pot cover to the main unit.

NOTE For safety purposes, keep the solder pot cover closed when not working.

- Set the type of solder you will use in parameter No. 26.

Sn-Pb
Sn-Ag-Cu
Sn-Cu
Sn
Sn-Bi

Select the type that is closest to the solder you will be using.

- Set the pot size in parameter No. 27.

50 × 50 mm square
75 × 75 mm square
100 × 100 mm square

