

# HAKKO Installing the software

## 1 Software

- The contents of this manual are subject to change without notice.
- The specifications of this software are subject to change without notice due to improvements.
- Reproducing or copying this document, in whole or in part, is prohibited.

## 2 Trademarks

System names, product names, and service names on this document are generally registered trademarks or trademarks of their respective developers.

This document does not include TM, (R) marks.

## 3 Disclaimers

We will assume that, by downloading and installing this software, the customer has agreed to the following disclaimers.

- We will bear no responsibility for any claims for losses, lost earnings, or claims by third parties due to operation of this software.
- We will bear no responsibility for any problems that result through download and installation of this software.
- The company retains all property rights, ownership rights, intellectual property rights, etc. related to this software.

## 4 Installing the Software

- (1) Double-click the CD-ROM or the downloaded software.  
File name: HAKKOControlSoftwareSetup X.X.X.X.exe
- (2) Select the language and click [OK].
- (3) After checking the License Agreement, select [I accept the agreement] and click [Next].

Figure 1-1

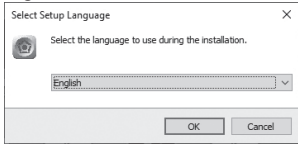
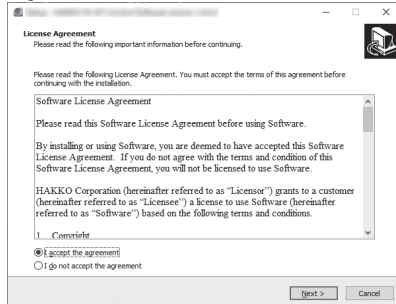


Figure 1-2



- (4) From here, follow the instructions on the screen.
- (5) The software will automatically launch when the installation is completed. (Figure 1-3)
- (6) Click [Exit] to exit the software. (Figure 1-4/1-5)

Figure 1-3



Figure 1-4

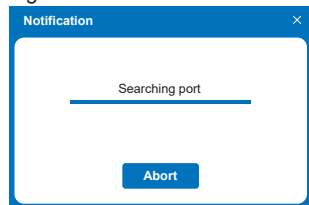
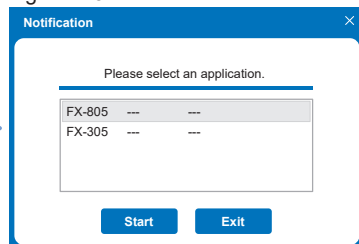


Figure 1-5



## 5 Connecting to a PC

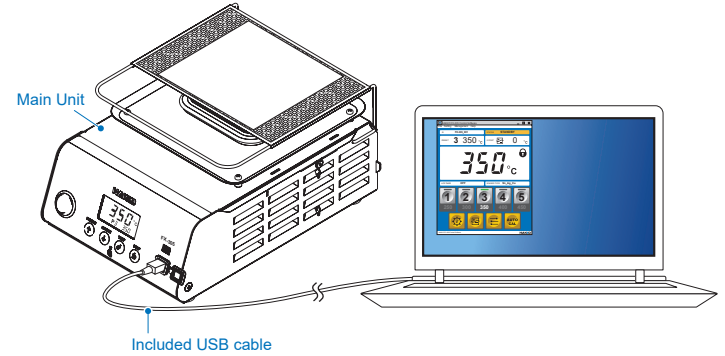
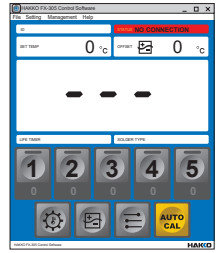
- (1) Connect the main unit to a PC with the included USB cable.
- (2) Turn the main unit power switch ON.
- (3) Launch the software.

### NOTE

If [- -] appears on the display as shown in the right figure even after the PC is connected, turn OFF the main unit power switch and then turn it ON again.

### NOTE

Do not use a USB cable that is more than two meters long.



## 6 Software Updates

Follow the instructions below to download the latest software.

- (1) Go to [Customer Support > support and services > login and new user registration] on the HAKKO website.

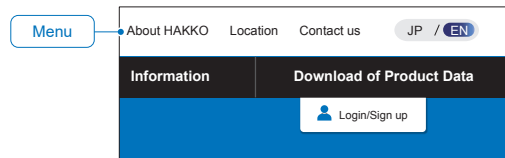


[https://www.hakko.com/doc\\_support-e](https://www.hakko.com/doc_support-e)

- (2) Log in, or create an account.
- (3) Click [My page (Product registration from here)] to register the product.

**NOTE** Product must be registered to download software.

- (4) Click [Download of Product Data] under the menu.



- (5) Select [Software] under the various resource search options.
- (6) Input the product name as the keyword.
- (7) Select the language and click [Search with these conditions].
- (8) Click [Download] in the search results.



### HAKKO CORPORATION HEAD OFFICE

4-5, Shiokusa 2-chome, Naniwa-ku, Osaka 556-0024 JAPAN  
TEL: +81-6-6561-3225 FAX: +81-6-6561-8466  
<https://www.hakko.com> E-mail: [sales@hakko.com](mailto:sales@hakko.com)

### OVERSEAS AFFILIATES

**U.S.A.: AMERICAN HAKKO PRODUCTS, INC.**

TEL: (661) 294-0090 FAX: (661) 294-0096  
Toll Free (800) 88-HAKKO  
<https://www.HakkoUSA.com> E-mail: [Support@HakkoUSA.com](mailto:Support@HakkoUSA.com)

**HONG KONG: HAKKO DEVELOPMENT CO., LTD.**

TEL: 2811-5588 FAX: 2590-0217  
<https://www.hakko.com.cn> E-mail: [info@hakko.com.hk](mailto:info@hakko.com.hk)

**SINGAPORE: HAKKO PRODUCTS PTE., LTD.**

TEL: 6748-2277 FAX: 6744-0033  
<https://www.hakko.com.sg> E-mail: [sales@hakko.com.sg](mailto:sales@hakko.com.sg)

Please access the code for overseas distributors.  
[https://www.hakko.com/doc\\_network](https://www.hakko.com/doc_network)



© 2022 HAKKO Corporation. All Rights Reserved.  
Company and product names are trademarks or registered trademarks of their respective companies.

## 1. Menu

### File

- Port selection**  
Used to manually select Port Number.
- Exit**  
Used when exiting software.

### Setting

- Language: Japanese/English/Chinese**  
Select one of these languages.
- Display temperature unit: °C/°F**  
Select the unit for temperature.
- Select application**  
Select the unit.

### Management

- File storage location:**  
Parameter setting file/  
Automatic calibration result file  
Select where files are saved.  
**NOTE** By default, files are saved in the same location as software folder.

### Help

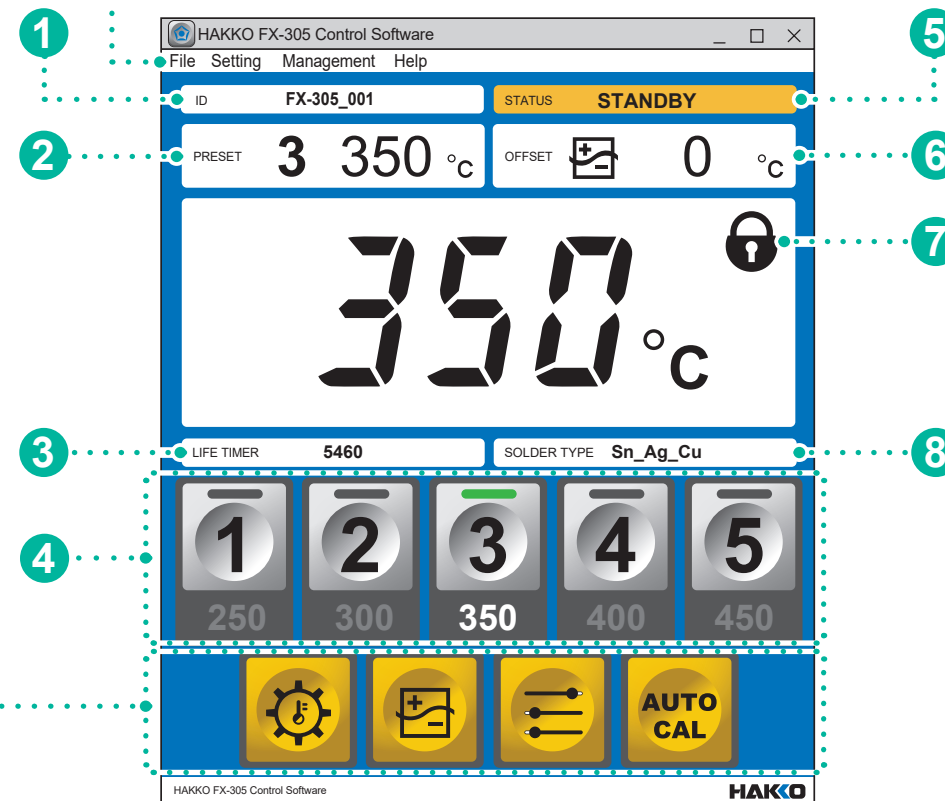
- Connection unit version information**  
Shows the connection unit firmware version.
- Version information**

## 2. Screen Description

See "1. Menu"

See "3. Operation Buttons"

- Temperature Change**
- Internal Pot Temperature Correction (offset)**
- Parameter Setting**
- Automatic Calibration and Recorder**



**1** Connection unit name is displayed.  
The connection unit can be named in the Parameter Setting button under the section [ID].

**2** The Setting Temp status is displayed.  
 • Manual inputting temperature displays [SET TEMP]  
 • Preset temperature displays [PRESET] and the preset number.

SET TEMP 350 °C

350 °C  
350

Connection unit display

This can be done through the Temperature Change button.

PRESET 3 350 °C

350 °C  
P3 350

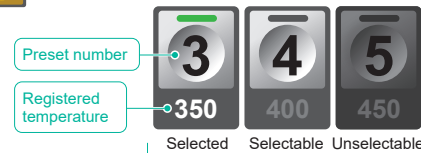
Connection unit display

You can change the Setting Temp manually or by selecting one of the preset temperature buttons.

**3** The accumulated pot usage time (unit: hour) is displayed.  
Use as an approximate guide when to replace the pot.

**NOTE** When [OFF] is displayed, [Life Timer Menu] in button is set to [OFF].

**4** The temperature registered for each preset number is displayed.  
The preset temperatures can be changed in the Parameter Setting button under [Temp Set Menu].



- Factory default setting temperatures:  
No.1: 250°C (600°F)  
No.2: 300°C (700°F)  
No.3: 350°C (750°F)  
No.4: 400°C (800°F)  
No.5: 450°C (850°F)

The preset temperature selection status is shown by the button color.

Why are some buttons unselectable?

[Preset 5 ON/OFF] is set to [OFF] under the [Temp Set Menu] of the button.

**5** The operating status of the connection unit is displayed.

**STANDBY**

Internal pot temperature rising

**RUNNING**

Operating normally

**STOP**

Heater is OFF and internal pot temperature is dropping (Under Stop mode)

**LIFE TIME OVER**

Reached the time (accumulated pot usage time) set under the [Life Timer Menu] in the button

**SENSOR ERROR**

Heating element/sensor not detected

**LEAK ERROR**

Status that foreign matter has entered in the heat insulation plate located under the pot, or a hole in the pot caused solder leakage into the interior of the main unit

**NO CONNECTION**

Connection unit is turned OFF or the main unit is not connected to the PC

**ZEROCROSS ERROR**

Power supply abnormality or the main unit is damaged

**6** The correction value (offset value) is displayed.  
The offset can be changed using the Internal Pot Temperature Correction button or the Automatic Calibration and Recorder button.

Displayed when **the parameter setting change is locked**.

**7** This can be locked/unlocked in the Parameter Setting button under [Lock Menu].

**8** Solder type is displayed.

The solder type can be changed in the Parameter Setting button under [Pot Menu].

## 3. Operation Buttons

### Temperature Change

**NOTE** Change the set temperature here, the preset temperature selection is automatically canceled.

### Internal Pot Temperature Correction (offset)

(See "4-3. Operation" in the Instruction Manual)

**NOTE** The internal pot temperature can be corrected with the following two methods.

**NOTE** This will not function when the connection unit is in offset mode.

Manual input	Using the HAKKO thermometer with the Temperature Sending Function
(1) Measure the Internal pot temperature	(1) Measure the Internal pot temperature
(2) Input the offset value	(2) Send the measured temperature
(3) Click the [Confirm] button	(3) Click the [Confirm] button
(4) Click the [Close] button	(4) Click the [Close] button

### Parameter Setting

(See "Quick Parameter Settings" in the Instruction Manual)

The current settings are highlighted in blue **A** and can be changed in the column to the right **B**. By clicking the [Confirm] button, the buzzer will sound, and [Sys] or [Set] will display on the connection unit to show the settings have been updated.

The settings can be saved or loaded as CSV files. Click the [Save] button to store the settings from **B**. Default file name: FX-305-Parameter.csv

Click the [Load] button and select CSV file to input the settings, and then click [Confirm] to apply the settings.  
\* The file name is displayed in the upper left corner.

**If the selected file name has an "\*"...**  
When the **B** values are changed after loading, "\*" mark will be added at the end of the file name.  
Example: FX-305-Parameter.csv\*

Parameter No. correspondence table			
Pot Menu	Parameter No. 26	Lock Menu	Parameter No. 14
Solder Type	Parameter No. 26	Temp Set Menu	Parameter No. 23
Pot Size	Parameter No. 27	Preset Temp	Parameter No. 23
Life Timer Menu	Parameter No. 28	Preset ON/OFF	Parameter No. 24
ON/OFF	Parameter No. 28		
Time	Parameter No. 29		
Alarm Menu			
Ready Alarm	Parameter No. 15		

Display the file name selected during loading

Confirm the changed values

Load File

Save File

If the ID of the connection unit is not registered, it will be displayed as below.

ID	No Data
----	---------

### AUTO CAL Automatic Calibration and Recorder

**What is Automatic Calibration?**  
It is an operation to automate internal pot temperature management, and to save the proper calibration results.

- Automatically saves the calibration results when the calibration is completed
- Compiles one month of saved calibration results in one CSV file  
File name: FX-305CAL\_2022\_01.csv

Product Name      Calibration year and month

If a calibration was within the same month, it is sequentially saved to the same file.

### Calibration procedure

Check this box if the pot was replaced. This will allow you to know when the pot was replaced when viewing the calibration result data or a graph.

(1) Set the conditions during Automatic calibration with the button.

(2) Click the button and follow message **C** to calibrate. Set the conditions during.

### Calibration results

- You may select one of the following search conditions.
- Date Search ..... Specify the date for the period that you wish to check
  - Number of histories ... Specify the recent histories that you wish to check

### Procedure to display the calibration results

The following is an example for "Number of histories".

**NOTE** The calibration results can be displayed even if the connection unit is turned OFF.

- Click the [Calibration results] button to display the screen to input the search conditions.
- Input [10] in the [Number of histories] bar.

Date search example  
Click the check box and specify the date. You can also search across months as follows.

Number of histories 10  
There is no need to erase the Number of histories.

- Click the [Search] button.
- The search results (latest 10 entries) are displayed.

Select one row to display all of the values as a list

- Click [Graph].
- The 10 search results are graphed.

