

# HAKKO Installing the software

## 1 Software

- The contents of this manual are subject to change without notice.
- The specifications of this software are subject to change without notice due to improvements.
- Reproducing or copying this document, in whole or in part, is prohibited.

## 2 Trademarks

System names, product names, and service names on this document are generally registered trademarks or trademarks of their respective developers.

This document does not include TM, (R) marks.

## 3 Disclaimers

We will assume that, by downloading and installing this software, the customer has agreed to the following disclaimers.

- We will bear no responsibility for any claims for losses, lost earnings, or claims by third parties due to operation of this software.
- We will bear no responsibility for any problems that result through download and installation of this software.
- The company retains all property rights, ownership rights, intellectual property rights, etc. related to this software.

## 4 Installing the Software

- (1) Double-click the CD-ROM or the downloaded software.  
File name: HAKKOControlSoftwareSetup X.X.X.X.exe
- (2) Select the language and click [OK].
- (3) After checking the License Agreement, select [I accept the agreement] and click [Next].

Figure 1-1

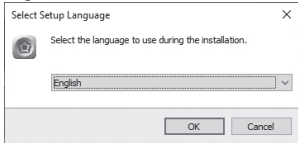
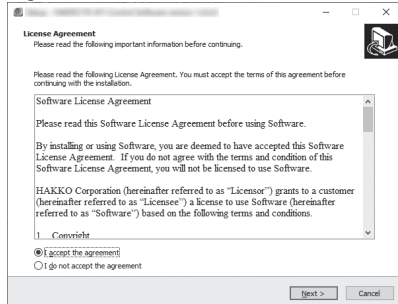


Figure 1-2



- (4) From here, follow the instructions on the screen.
- (5) The software will automatically launch when the installation is completed. (Figure 1-3)
- (6) Click [Exit] to exit the software. (Figure 1-4/1-5)

Figure 1-3



Figure 1-4

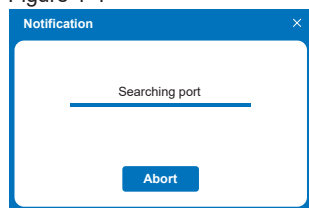
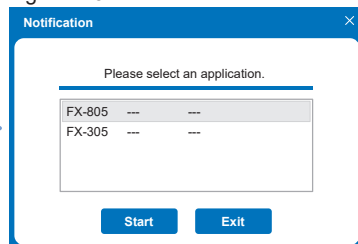


Figure 1-5



## 5 Connecting to a PC

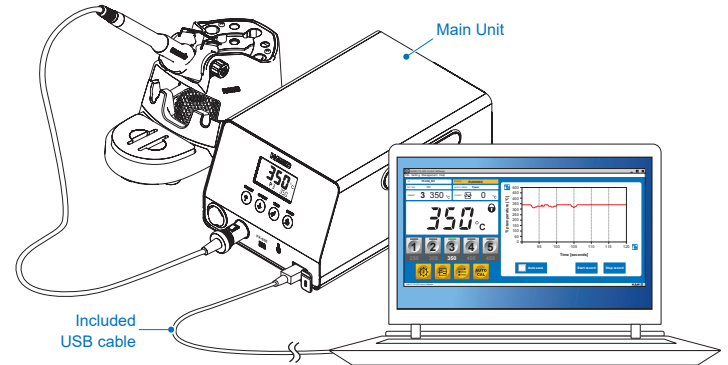
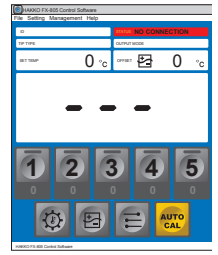
- (1) Connect the main unit to a PC with the included USB cable.
- (2) Place the handpiece on the iron holder.
- (3) Connect the main unit and the handpiece.
- (4) Turn the main unit power switch ON.
- (5) Launch the software.

### NOTE

If [ - - ] appears on the display as shown in the right figure even after the PC is connected, turn OFF the main unit power switch and then turn it ON again.

### NOTE

Do not use a USB cable that is more than two meters long.



## 6 Software Updates

Follow the instructions below to download the latest software.

- (1) Go to [Customer Support > support and services > login and new user registration] on the HAKKO website.



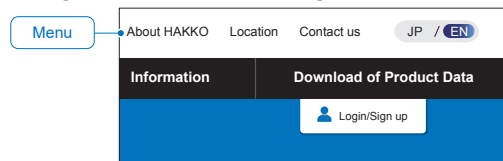
[https://www.hakko.com/doc\\_support-e](https://www.hakko.com/doc_support-e)

- (2) Log in, or create an account.
- (3) Click [My page (Product registration from here)] to register the product.

### NOTE

Product must be registered to download software.

- (4) Click [Download of Product Data] under the menu.



- (5) Select [Software] under the various resource search options.
- (6) Input the product name as the keyword.
- (7) Select the language and click [Search with these conditions].
- (8) Click [Download] in the search results.



### HAKKO CORPORATION HEAD OFFICE

4-5, Shiokusa 2-chome, Naniwa-ku, Osaka 556-0024 JAPAN  
TEL: +81-6-6561-3225 FAX: +81-6-6561-8466  
<https://www.hakko.com> E-mail: [sales@hakko.com](mailto:sales@hakko.com)

### OVERSEAS AFFILIATES

#### U.S.A.: AMERICAN HAKKO PRODUCTS, INC.

TEL: (661) 294-0090 FAX: (661) 294-0096  
Toll Free (800) 88-HAKKO  
<https://www.HakkoUSA.com> E-mail: [Support@HakkoUSA.com](mailto:Support@HakkoUSA.com)

#### HONG KONG: HAKKO DEVELOPMENT CO., LTD.

TEL: 2811-5588 FAX: 2590-0217  
<https://www.hakko.com.cn> E-mail: [info@hakko.com.hk](mailto:info@hakko.com.hk)

#### SINGAPORE: HAKKO PRODUCTS PTE., LTD.

TEL: 6748-2277 FAX: 6744-0033  
<https://www.hakko.com.sg> E-mail: [sales@hakko.com.sg](mailto:sales@hakko.com.sg)

Please access the code for overseas distributors.  
[https://www.hakko.com/doc\\_network](https://www.hakko.com/doc_network)



© 2022 HAKKO Corporation. All Rights Reserved.  
Company and product names are trademarks or registered trademarks of their respective companies.

## 1. Menu

### File

- Port selection**  
Used to manually select Port Number.
- Exit**  
Used when exiting software.

### Setting

- Language: Japanese/English/Chinese**  
Select one of these languages.
- Display temperature unit: °C/°F**  
Select the unit for temperature.
- Select application**  
Select the unit.

### Management

- File storage location:**  
Parameter setting file/  
Automatic calibration result file/  
Tip sensor temperature monitor file  
Select where files are saved.  
**NOTE** By default, files are saved in the same location as software folder.

- Tip sensor temperature monitor auto save: ON/OFF**  
When set to [ON], the Tip sensor temperature will be recorded constantly and saved as CSV file.  
**NOTE** Default is OFF.

- Tip sensor temperature monitor file split interval (minutes): 1 to 120**  
Segments CSV files into multiple files based on minutes.  
**NOTE** Default is 5 min.

### Help

- Connection unit version information**  
Shows the connection unit firmware version.
- Version information**

## 2. Screen Description

The screenshot shows the main control interface with the following elements highlighted by callouts:

- 1:** Connection unit ID (FX-805\_001)
- 2:** Tip type (T37)
- 3:** Preset temperature (3, 350 °C)
- 4:** Preset temperature selection buttons (1-5)
- 5:** Operating status (RUNNING)
- 6:** Output mode (Power)
- 7:** Correction value (offset) (0 °C)
- 8:** Lock icon
- 9:** Tip sensor temperature graph

Additional callouts include:

- See "1. Menu"** pointing to the menu bar.
- See "3. Operation Buttons"** pointing to the bottom control buttons: Temperature Change, Tip Temperature Correction (offset), Parameter Setting, and Automatic Calibration and Recorder.
- Turn ON/OFF** pointing to the Auto save checkbox.
- Disabled during Auto save** pointing to the Start and Stop record buttons.

- Connection unit name** is displayed.  
The connection unit can be named in the Parameter Setting button under the section [ID].
- The tip type** in use is displayed.  
The tip type will update automatically based on the tip.
- The Setting Temp** status is displayed.
  - Manual inputing temperature displays [SET TEMP]
  - Presets temperature displays [PRESET] and the preset number.
- The temperature registered** for each preset number is displayed. The preset temperatures can be changed in the Parameter Setting button under [Temp Set Menu].
  - Factory default setting temperatures:  
No.1: 250°C (600°F)  
No.2: 300°C (700°F)  
No.3: 350°C (750°F)  
No.4: 400°C (800°F)  
No.5: 450°C (850°F)

Why are some buttons unselectable?  
[Preset 5 ON/OFF] is set to [OFF] under the [Temp Set Menu] of the button.

- The operating status of the connection unit** is displayed.
- RUNNING**  
Operating normally
  - SLEEP**  
Sleep state
  - SHUT OFF**  
Time specified in the ShutOff Menu has elapsed
  - SENSOR ERROR**  
Tip heating element/sensor not detected
  - GRIP ERROR**  
Inapplicable handpiece connected or the handpiece is disconnected
  - NO CONNECTION**  
Connection unit is turned OFF or the main unit is not connected to the PC
  - HEATERSHORT ERROR**  
Inapplicable tip inserted
  - ZEROCROSS ERROR**  
Power supply abnormality or the main unit is damaged
  - TIP DETECTION ERROR**  
Inapplicable tip detected

- The selected **output mode** is displayed.  
The mode can be changed in the Parameter Setting button under [Output mode setting].
- The correction value (offset value)** is displayed.  
The offset can be changed using the Tip Temperature Correction button or the Automatic Calibration and Recorder button.
- Displayed when **the parameter setting change is locked**.  
This can be locked/unlocked in the Parameter Setting button under [Lock Menu].
- The tip sensor temperature** can be displayed on a graph.
  - The graph data can be manually or automatically saved  
Manually record: Pressing [Start record], pressing [Stop record] ends the recording  
Recording with Auto save: files will be saved depending on the value inputted in [Tip sensor temperature monitor file split interval (minutes)].
  - Saved file name  
During manual saving: FX-805TEMP\_M\_220101\_093358.csv  
During automatic saving: FX-805TEMP\_220101\_093358.csv  
Date stamp of recording: January 1, 2022, 9:33:58
  - The graph "Time axis" and "Temperature axis" settings can be changed  
Click button to display the Setting screen.

See [Management] in "1. Menu" for the storage location and the auto save timing.

Time axis default		Temperature axis default	
Length of time displayed	30 seconds	Maximum Temperature Displayed	500°C/950°F
Time Scale Interval	5 seconds	Minimum Temperature Displayed	0°C/0°F
		Temperature Scale Interval	50°C/50°F

## 3. Operation Buttons

### Temperature Change

Change the set temperature

**NOTE** If the temperature is changed here, the preset temperature selection is automatically canceled.

### Tip Temperature Correction (offset)

(See "4-3. Operation" in the Instruction Manual)

The tip temperature can be corrected with the following two methods.

**NOTE** This will not function when the connection unit is in offset mode.

Manual input	Using the HAKKO thermometer with the Temperature Sending Function
(1) Measure the tip temperature	(1) Measure the tip temperature
(2) Input the offset value	(2) Send the measured temperature
(3) Click the [Confirm] button	(3) Click the [Confirm] button
(4) Click the [Close] button	(4) Click the [Close] button

### Parameter Setting

(See "Quick Parameter Settings" in the Instruction Manual)

The current settings are highlighted in blue **A** and can be changed in the column to the right **B**. By clicking the [Confirm] button the buzzer will sound, and [Sys] or [Set] will display on the connection unit to show the settings have been updated.

The settings can be saved or loaded as CSV files. Click the [Save] button to store the settings from **B**. Default file name: FX-805-Parameter.csv

Click the [Load] button and select CSV file to input the settings, and then click [Confirm] to apply the settings.  
\* The file name is displayed in the upper left corner.

**If the selected file name has an "\*" "..."**

When the **B** values are changed after loading, "\*" mark will be added at the end of the file name.  
Example: FX-805-Parameter.csv\*

Parameter No. correspondence table	
<b>Sleep Menu</b>	<b>Lock Menu</b>
ON/OFF Parameter No. 07	Parameter No. 14
Activation Time Parameter No. 02	Temp Set Menu
Sleep Temp Parameter No. 13	Preset Temp Parameter No. 23
<b>ShutOff Menu</b>	Preset ON/OFF Parameter No. 24
ON/OFF Parameter No. 08	<b>Output Mode Setting</b>
Activation Time Parameter No. 18	Parameter No. 12
<b>Alarm Menu</b>	
Error Alarm Parameter No. 05	
Ready Alarm Parameter No. 06	
Low Temp Alarm Parameter No. 03	

Display the file name selected during loading

Confirm the changed values

Load File

Save File

If the ID of the connection unit is not registered, it will be displayed as below.

ID	Value
ID	No Data

### AUTO CAL Automatic Calibration and Recorder

**What is Automatic Calibration?**  
It is an operation to automate tip temperature management, and to save the proper calibration results.

- Automatically saves the calibration results when the calibration is completed
- Compiles one month of saved calibration results in one CSV file  
File name: FX-805CAL\_2022\_01.csv

Product Name Calibration year and month

If a calibration was within the same month, it is sequentially saved to the same file.

**Calibration procedure**

Check this box if the tip was replaced. This will allow you to know when the tip was replaced when viewing the calibration result data or a graph.

(1) Set the conditions during Automatic calibration with the button.

(2) Click the button and follow message **C** to calibrate. Set the conditions during.

- Calibration results**
- You may select one of the following search conditions.
- Date Search ..... Specify the date for the period that you wish to check
  - Number of histories ..... Specify the recent histories that you wish to check

Procedure to display the calibration results

The following is an example for "Number of histories".

**NOTE** The calibration results can be displayed even if the connection unit is turned OFF.

- Click the [Calibration results] button to display the screen to input the search conditions.
- Input [10] in the [Number of histories] bar.

Date search example  
Click the check box and specify the date. You can also search across months as follows.

Number of histories 10  
There is no need to erase the Number of histories.

- Click the [Search] button.
- The search results (latest 10 entries) are displayed.

Select one row to display all of the values as a list

- Click [Graph].
- The 10 search results are graphed.

