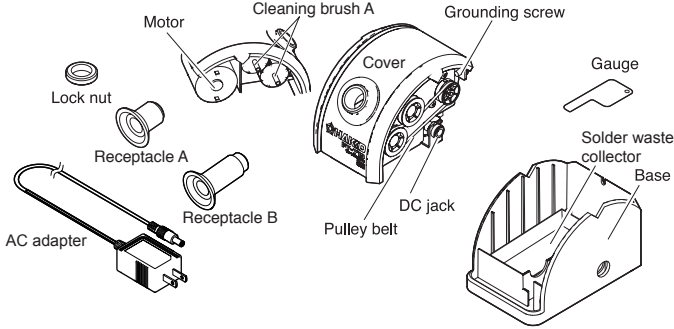


Thank you for purchasing the HAKKO FT-710 capitalize 'tip cleaner'.
Please read this manual before operating the HAKKO FT-710.
Keep this manual readily accessible for reference.

1. PACKING LIST AND PART NAMES

Please check to make sure that all items listed below are included in the package

HAKKO FT-710	1	Lock nut	1
Receptacle A	1	AC adapter	1
Receptacle B	1	Gauge	1



2. SPECIFICATIONS

● HAKKO FT-710

Model	HAKKO FT-710
Motor rating	24VDC 130mA
Dimensions	71 (W)×77 (H)×107 (D)mm
Weight	450g
Brush rotational speed	2500rpm

● AC adapter

Rating	24VDC
--------	-------

* This product is protected against electrostatic discharge.

* Specifications and design are subject to change without notice.

3. SAFETY NOTICES

● To prevent accidents or damage to the HAKKO FT710, be sure to observe the following:

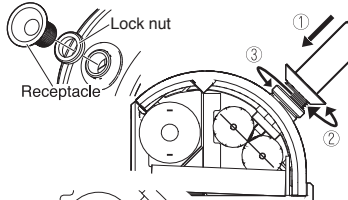
⚠ CAUTION

- Do not modify the HAKKO FT-710.
- Do not use the product as an iron holder.
- Do not carry the product by the receptacle or AC adapter cord.
- When carrying the product, hold upright by the base.
- Do not use AC adapters other than supplied.
- Always hold the plug when plugging or unplugging the AC adapter into or from the DC jack.
- Before replacing parts or storing the product, turn off the power and allow the product to cool to room temperature.
- Do not allow the HAKKO FT-710 to become wet, or use it when hands are wet.
- Use only genuine HAKKO replacement parts.
- While using HAKKO FT-710, do not do anything which may cause bodily harm.

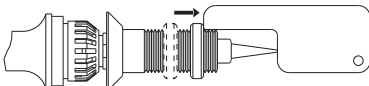
4. OPERATION

4.1 Aligning the iron

- Referring to the optional parts list in Section 6, install the applicable receptacle for the iron or the tip used.
- Insert the tip while cold into the receptacle. Rotate the receptacle to align the point of the tip to the line connecting to the rotational centers of the brushes as seen in the illustration.
- Secure the receptacle with the lock nut.



NOTE:
Using the supplied gauge will make it easier to align the iron tip.



Removing the cleaning brush will make it easier to align the iron tip.

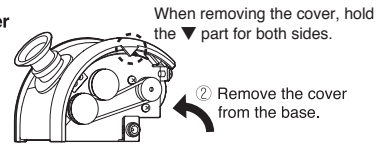
⚠ CAUTION

- A failure to align the iron tip or the use of the wrong receptacles may result in poor cleaning and/or damage to the cleaning brushes.
- Note that prolonged brushing could promote deterioration while tip is hot.

4. OPERATION

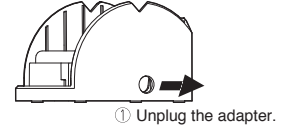
4.2 Installing and removing the cover

- The cover of the unit cannot be removed as long as the AC adapter is plugged into the DC jack. Be sure to unplug the AC adapter before attempting to remove the cover from the unit.



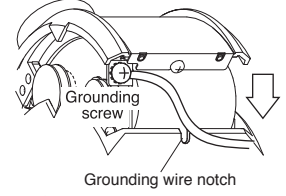
⚠ CAUTION

Do not attempt to use the unit outside the base.



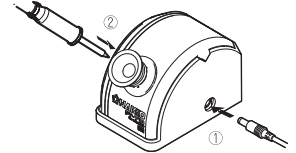
4.3 Grounding the unit

- Connect a grounding wire to the M4 grounding screw.



4.4 Cleaning a Tip

Plug the AC adapter into the DC jack and insert the tip into the receptacle; the tip is brushed and cleaned.

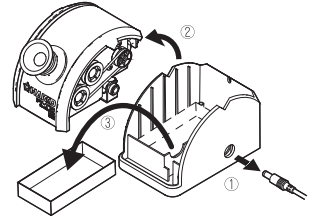


This unit allows quick cleaning of soldering iron tips. Note that prolonged brushing could promote deterioration.

5. MAINTENANCE

5.1 Removing solder waste

- 1 Unplug the AC adapter from the DC jack.
- 2 Holding the tabs on the sides of the unit, remove the unit from the base.
- 3 Remove the solder waste collector from the base and clean out the tray.

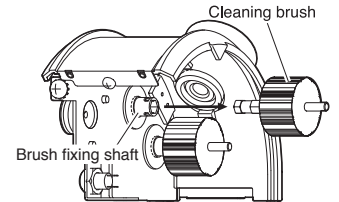


⚠ CAUTION

- Excessive debris in the debris tray may contact the cleaning brushes, reducing their service life.
- Be sure to remove any solder or flux residue found outside the debris tray. Failure to do so may result in poor cleaning.

5.2 Replacing the cleaning brushes

- Remove the unit in the same manner as "Removing solder waste".
- Pull the cleaning brushes out of the brush holding shafts.
- Insert new cleaning brushes into the Brush holding shafts.



NOTE:

Optional metal cleaning brushes are also available which provide increased cleaning power.

6. PARTS LIST

● REPLACEMENT PARTS

Part No.	Part Name	Specifications
A1566	Cleaning brush A	Plastic brushes, 2 pcs.
A1567	Cleaning brush B	Metal brushes, 2 pcs.
B3520	Pulley belt	
B3521	Solder waste collector	
B3522	Base	With rubber feet.
B3523	Lock nut	

● OPTIONAL PARTS

Part No.	Part Name	Specifications
B3517	Receptacle A	For FM-2027, FM-2028, FX-901
B3518	Receptacle B	For FX-8801, 900M, 907, 957, 933
B3519	Receptacle C	For FM-2026, 917, FX-8301

For receptacles for additional HAKKO soldering irons, please contact your HAKKO representative.

Not all tips are compatible with this unit. See reverse side for additional information.

The following tip is not compatible with standard receptacle.
Please contact your HAKKO representative for option.

Tip Series	Part No.	Tip Series	Part No.
T7	T7-KF	T20	T20-K
T12	T12-WB2		T20-KU
	T12-WD08		T20-BL
	T12-WD12		T20-BL2
	T12-WD16		T20-BL3
	T12-WD52	T10	T10-J02
	T12-WI		T10-K
	T12-DL52		T10-KL
	T12-KF		T10-KU
900M	900M-T-LB		T10-LB
	900M-T-1.2LD	T10-LI	

The following tip can not be cleaned with FT-710.

Tip Series	Part No.
T7	T7-JL02
	SPATULA
T12	T12-JL02
	QUAD
	TUNNEL
900M	SPATULA
	900M-T-H
	900M-T-1.8H

■ Electrostatic Protection

This product includes such features as electrically conductive plastic parts and grounding of the unit as measures to protect the device to be soldered from the effects of static electricity. Be sure to observe the following instructions:

1. Plastic parts are not insulators, they are conductors. When replacing parts or repairing, take sufficient care not to expose live electrical parts or damage insulation materials.
2. Be sure to ground the unit during use.

- ※ 各言語（日本語、英語、中国語、フランス語、ドイツ語、韓国語）の取扱説明書は以下のURL、HAKKO Document Portalからダウンロードしてご覧いただけます。
（商品によっては設定の無い言語がありますが、ご了承ください）
- * 各國語言(日語,英語,中文,法語,德語,韓語)的使用說明書可以通過以下網站的HAKKO Document Portal 下載參閱。
(有一部分的產品沒有設定外語對應,請見諒)
- * Instruction manual for the language, Japanese, English, Chinese, French, German and Korean can be downloaded from the following URL, HAKKO Document Portal.
(Please note that some language may not be available depending on the product.)



<https://doc.hakko.com>



HAKKO CORPORATION

HEAD OFFICE

4-5, Shiokusa 2-chome, Naniwa-ku, Osaka 556-0024 JAPAN

TEL:+81-6-6561-3225 FAX:+81-6-6561-8466

<http://www.hakko.com> E-mail:sales@hakko.com

OVERSEAS AFFILIATES

U.S.A.: AMERICAN HAKKO PRODUCTS, INC.

TEL: (661) 294-0090 FAX: (661) 294-0096

Toll Free (800)88-HAKKO

<http://www.hakkousa.com>

HONG KONG: HAKKO DEVELOPMENT CO., LTD.

TEL: 2811-5588 FAX: 2590-0217

<http://www.hakko.com.hk>

E-mail:info@hakko.com.hk

SINGAPORE: HAKKO PRODUCTS PTE., LTD.

TEL: 6748-2277 FAX: 6744-0033

<http://www.hakko.com.sg>

E-mail:sales@hakko.com.sg

Please access to the following address for the other Sales affiliates.

<http://www.hakko.com>